

21 SPRYS ELECTIVE E091 (P) (SFA)

Age: 23 months

DOB: 21/09/09

Colour: Red

Ident No.: MKSE091

GENEFFE UNDERWOOD (P) Red
COOLONG XS574 (P) (SFA) RLW
COOLONG ST449 (P) (SFA)

Sire: **GLENELL IMF B90 (P) (SFA) Red**

SPRYS GRANDSLAM T58 (P) (ET) (AI) Roan
GLENELL X154 (P) (SFA)

BYLAND LEGACY SRD15 ET (H) (SFA) Red
JR LEGEND 78H (IMP USA) (P) Red
JR FANCY LADY 96E (P) (SFA) RLW

Dam: **SPRY'S MISS LEGEND Z154 (P) (AI) (SFA) Red**

GLENELL W01 (P) (SFA)

NOTES: **Top 10% Export Index**
Top 15% 400 Day wt & Domestic Index
Top 20% 600 day wt & IMF
Top 25% 200 day wt & SB3 index

"Elective" is a moderate, easy doing bull with a nice muscle pattern. A nice blend of IMF and Legend genetics. This bull would be suitable for use on Heifers. A nice balance of EBV's.

SELECTION INDEX VALUES	
Target Market:	Index Value:
Heavy Domestic	+\$34
Export Maternal	+\$37
SB3 Carcase	+\$35

MEASUREMENTS	
Scrotal Size	
Weight	
EMA	
Rib Fat	
Rump Fat	
IMF	

Purchaser:.....\$.....

INTERIM GROUP BREEDPLAN EBVs 20/06/2011

	BW	200	400	600	SS	EMA	RIB	RUMP	RBV	IMF
EBV	+2.9	+29	+44	+55	+1.1	+2.8	-0.7	-0.4	+0.8	+0.8
ACC	69%	58%	56%	56%	46%	34%	38%	38%	37%	34%

Traits Observed: BWT, 600WT, SS, FAT, EMA, IMF

22 SPRYS ENDEAVOUR E039 (P) (SFA)

Age: 23 months

DOB: 19/09/09

Colour: Roan

Ident No.: MKSE039

GENEFFE UNDERWOOD (P) Red
COOLONG XS574 (P) (SFA) RLW
COOLONG ST449 (P) (SFA)

Sire: **GLENELL IMF B90 (P) (SFA) Red**

SPRYS GRANDSLAM T58 (P) (ET) (AI) Roan
GLENELL X154 (P) (SFA)

SPRYS PRIME TIME P62 (P) (SFA) White
SPRYS ON TIME R89 (P) (SFA) Roan
L'AMOUR TELETAIL 3RD (P) (AI) (SFA) RLW

Dam: **DELTR0IT V73 (P) (SFA) Roan**

NOTES: **Top 15% 400 Day wt**
Top 20% 600 Day wt

"Endeavour" shows great length, growth and structural soundness. Sired by the Glenell IMF bull whose sons have topped at \$22,000 and semen rights sold to the USA. His Dam, V73 is a big volume cow with heaps of capacity and depth. V73's sons have sold to \$8,000.

SELECTION INDEX VALUES	
Target Market:	Index Value:
Heavy Domestic	+\$25
Export Maternal	+\$27
SB3 Carcase	+\$32

MEASUREMENTS	
Scrotal Size	
Weight	
EMA	
Rib Fat	
Rump Fat	
IMF	

Purchaser:.....\$.....

INTERIM GROUP BREEDPLAN EBVs 17/06/2011

	BW	200	400	600	SS	EMA	RIB	RUMP	RBV	IMF
EBV	+3.0	+27	+45	+54	+1.4	+2.5	-1.3	-1.3	+1.0	+0.4
ACC	70%	61%	64%	59%	43%	30%	36%	36%	34%	30%

Traits Observed: BWT, 400WT, 600WT, SS, FAT, EMA, IMF

23 SPRYS ELABORATE E090 (P) (SFA)

Age: 22 months

DOB: 03/10/09

Colour: Roan

Ident No.: MKSE090

MGENEFFE UNDERWOOD (P) Red
COOLONG XS574 (P) (SFA) RLW
COOLONG ST449 (P) (SFA)

Sire: **GLENELL IMF B90 (P) (SFA) Red**

SPRYS GRANDSLAM T58 (P) (ET) (AI) Roan
GLENELL X154 (P) (SFA)

Dam: **GLENELL W6 (P) (SFA) Roan**

NOTES: **Top 1% BIRTH**
Top 30% Export Maternal Index

"Elaborate" is a very complete bull whose dam produces an excellent calf every year. He displays a moderate frame and doing ability and would be an extremely good bull to use on heifers. Note, his birth EBV.

SELECTION INDEX VALUES	
Target Market:	Index Value:
Heavy Domestic	+\$26
Export Maternal	+\$30
SB3 Carcase	+\$23

MEASUREMENTS	
Scrotal Size	
Weight	
EMA	
Rib Fat	
Rump Fat	
IMF	

Purchaser:.....\$.....

INTERIM GROUP BREEDPLAN EBVs 17/06/2011

	BW	200	400	600	SS	EMA	RIB	RUMP	RBV	IMF
EBV	-0.6	+15	+31	+34	+0.6	+2.4	-0.9	-0.7	+0.7	+0.5
ACC	69%	59%	61%	57%	44%	29%	35%	35%	33%	28%

Traits Observed: BWT, 400WT, 600WT, SS, FAT, EMA, IMF

24 SPRYS ELECTRIC E069 (P) (SFA)

Age: 22.5 months

DOB: 27/09/09

Colour: Red

Ident No.: MKSE069

WEEBOLLABOLLA THEODORE T85 (P) Roan
 ROYALLA EXTERMINATOR (P) Roan
 ROYALLA ITA 10TH (P) (SFA) Roan
Sire: SPRY'S COLLEAGUE (P) (ET) (AI) Roan
 RPS BRAG (IMP USA) (P) White
 SPRYS BRAGS AUGUSTA M150 (H) White
 MASCOT PARK POWERHOUSES AUGUSTA (P) (SFA) Roan
 GUMBLE URANUS 3RD (P) (AI) RLW
 SPRYS RED URANUS V112 (H) (AI) Red
 GENEFFE FLAPPER (P) (SFA) (APX) Roan
Dam: SPRY'S MISS Z179 C069 (P) (AI) (SFA) Roan
 JR LEGEND 78H (IMP USA) (P) Red
 SPRYS Z179 (P) (SFA) Roan

NOTES: **Top 5% Scrotal**
Top 20% Export Index
Top 25% Domestic index & RIB
Top 30% 400 day wt & RUMP

"Electric" displays length and plenty of "do-ability". This sire is stacked with sound genetics and balanced EBV's. This bull would be suitable for use on heifers. A heifer's first calf.

SELECTION INDEX VALUES	
Target Market:	Index Value:
Heavy Domestic	+\$31
Export Maternal	+\$32
SB3 Carcase	+\$28

MEASUREMENTS	
Scrotal Size	
Weight	
EMA	
Rib Fat	
Rump Fat	
IMF	

Purchaser:.....\$.....

INTERIM GROUP BREEDPLAN EBVs 17/06/2011

	BW	200	400	600	MILK	SS	CWT	EMA	RIB	RUMP	RBY	IMF
EBV	+2.8	+26	+38	+44	+7	+2.6	+32	+3.3	-0.4	-0.4	+0.8	+0.5
ACC	67%	59%	63%	57%	37%	50%	35%	41%	41%	39%	37%	

Traits Observed: BWT, 400WT, 600WT, SS, FAT, EMA, IMF

25 SPRYS EXCEL E022 (P)

Age: 22.5 months

DOB: 18/09/09

Colour: Red

Ident No.: MKSE022

DEERHORN CRUICKSHANK 946 (IMP USA) (P) Red
 RONELLE PARK WYATT EARP (P) (AI) Roan
 RONELLE PARK MONOPOLYS JILL 1ST (P) (ET) (AI) Roan
Sire: SPRYS MASTER BLASTER Z039 (P) Roan
 RPS BRAG (IMP USA) (P) White
 SPRYS BRAGS AUGUSTA M150 (H) White
 MASCOT PARK POWERHOUSES AUGUSTA (P) (SFA) Roan
 GUMBLE CAPRICORN 2ND (P) (AI) Roan
 THE GROVE KUDU W024 (H) Roan
 THE GROVE DIZZY 1ST (H) (ET) (AI) Red
Dam: LACHLAN ISOBEL Z097 (H) (ET) (AI) Roan
 JR LEGEND 78H (IMP USA) (P) Red
 CRAMP CATTLE CO. & SPRYS LEGENDS ISOBEL (P) (ET) (AI) Roan
 SPRYS TRITANS ISOBEL Q95 (P) (ET) White

NOTES: **Top 25% Export Maternal Index**

A complete bull showing great growth for age and length of body. His Dam produces calves with plenty of weight and carcase.

SELECTION INDEX VALUES	
Target Market:	Index Value:
Heavy Domestic	+\$13
Export Maternal	+\$16
SB3 Carcase	+\$34

MEASUREMENTS	
Scrotal Size	
Weight	
EMA	
Rib Fat	
Rump Fat	
IMF	

Purchaser:.....\$.....

INTERIM GROUP BREEDPLAN EBVs 20/06/2011

	BW	200	400	600	MCW	MILK	SS	CWT	EMA	RIB	RUMP	RBY	IMF
EBV	+5.5	+27	+32	+48	+44	+5	+1.9	+27	+4.5	-1.2	-1.7	+1.8	+0.8
ACC	72%	64%	66%	62%	50%	41%	47%	54%	37%	43%	43%	41%	39%

Traits Observed: BWT, 400WT

26 SPRYS EXPO E063 (P)

Age: 22.5 months

DOB: 28/09/09

Colour: Red

Ident No.: MKSE063

DEERHORN CRUICKSHANK 946 (IMP USA) (P) Red
 RONELLE PARK WYATT EARP (P) (AI) Roan
 RONELLE PARK MONOPOLYS JILL 1ST (P) (ET) (AI) Roan
Sire: SPRYS MASTER BLASTER Z039 (P) Roan
 RPS BRAG (IMP USA) (P) White
 SPRYS BRAGS AUGUSTA M150 (H) White
 MASCOT PARK POWERHOUSES AUGUSTA (P) (SFA) Roan
 JR LEGEND 78H (IMP USA) (P) Red
 SPRYS JUST A LEGEND W019 (P) (ET) (AI) Red
 SPRYS CONDO JOYCE S100 (P) (ET) (AI) Roan
Dam: PAKARAKA GERTRUDE Y15 (P) Red
 DUNDEE PROPHET K2 (IMP NZE) (P) (SFA) Roan
 PAKARAKA PROPHETS GERTRUDE W15 (P) (ET) (AI) (SFA) Roan
 PAKARAKA ENTICERS GERTRUDE M70 (IMP NZE) (P) (SFA) Roan

NOTES: **Top 5% Scrotal**
Top 10% RBY
Top 30% EMA

"Expo" shows plenty of growth and length. His sire sold for \$48,000 and has bred simply outstanding genetics for those who have used him. A later maturing bull that would add growth to his progeny.

SELECTION INDEX VALUES	
Target Market:	Index Value:
Heavy Domestic	+\$15
Export Maternal	+\$21
SB3 Carcase	+\$32

MEASUREMENTS	
Scrotal Size	
Weight	
EMA	
Rib Fat	
Rump Fat	
IMF	

Purchaser:.....\$.....

INTERIM GROUP BREEDPLAN EBVs 17/06/2011

	CE-DIR	GL	BW	200	400	600	MCW	MILK	SS	CWT	EMA	RIB	RUMP	RBY	IMF
EBV	-5.4	+0.2	+4.8	+25	+28	+44	+36	+4	+2.3	+25	+4.3	-1.8	-2.7	+2.3	+0.4
ACC	40%	52%	72%	65%	68%	64%	53%	44%	47%	56%	40%	46%	46%	45%	42%

Traits Observed: BWT, 400WT, 600WT, SS, FAT, EMA, IMF

27 KOORON SPRYS LEGENDS DYNAMITE (P)

Age: 20 months

DOB: 29/12/09

Colour: Roan

Ident No.: KDCE033

RONELLE PARK WYATT EARP (P) (AI) Roan
 SPRYS MASTER BLASTER Z039 (P) Roan
 SPRYS BRAGS AUGUSTA M150 (H) White
Sire: LACHLAN DYNAMITE (P) (ET) (AI) Roan
 JR LEGEND 78H (IMP USA) (P) Red
 SPRYS LEGENDS LILY W009 (P) (AI) Roan
 SPRYS CHOICES LILY S111 (P) (SFA) Roan

NOTES: **Top 10% Scrotal, SB3 and Export Indexes**
Top 15% 200 day wt
Top 20% 400 day and IMF
Top 25% 600 day wt
Top 30% Domestic Index

A very moderate, easy doing bull who shows structural correctness and plenty of carcass.

SELECTION INDEX VALUES	
Target Market:	Index Value:
Heavy Domestic	+\$30
Export Maternal	+\$37
SB3 Carcase	+\$39

BYLAND LEGACY SRD15 ET (H) (SFA) Red
 JR LEGEND 78H (IMP USA) (P) Red
 JR FANCY LADY 96E (P) (SFA) RLW
Dam: LACHLAN LILY Z051 (P) (ET) (AI) Roan
 EDEN PARK RED RATTTLER V001 (P) (ET) (AI) Red
 SPRYS RATTTLERS LILY X027 (P) (AI) Roan
 SPRYS GEE NINE LILY S121 (P) Roan

Purchaser:.....\$.....

MEASUREMENTS	
Scrotal Size	
Weight	
EMA	
Rib Fat	
Rump Fat	
IMF	

INTERIM GROUP BREEDPLAN EBVs 20/06/2011										
	200	400	600	MILK	SS	EMA	RIB	RUMP	RBV	IMF
EBV	+34	+46	+53	+5	+1.8	+4.2	-1.2	-1.5	+1.9	+0.8
ACC	45%	45%	45%	38%	38%	34%	37%	37%	36%	35%

Traits Observed: 600WT, SS, FAT, EMA, IMF

28 SPRYS WAGON F225 (P) (AI) (SFA)

Age: 16 months

DOB: 19/04/10

Colour: Red

Ident No.: GLSF225

FUTURITY WAGON W32 (P) (SFA) Roan
 FUTURITY A011 (P) RLW
 FUTURITY ENIA'S LEGEND W11 (P) (AI) (SFA) Red
Sire: SPRYS ICONS WAGON C092 (P) (AI) (SFA) Roan
 TLC ICON X003 (P) (ET) (AI) (SFA) Red
 SPRYS ICONS CLOUD A087 (P) (SFA) RLW
 SPRYS LOCKHEADS CLOUD Y002 (P) (AI) (SFA) Roan

NOTES: **Top 5% for Scrotal & IMF**
Top 15% for Gestation Length

"Wagon's" sire was top priced bull in Sprys Wagga 2009 sale at \$27,000 and sold to The Grove & Arubial studs. A very impressive, thick, easy doing bull with a lot of potential. He also has an excellent balance of traits.

SELECTION INDEX VALUES	
Target Market:	Index Value:
Heavy Domestic	+\$15
Export Maternal	+\$18
SB3 Carcase	+\$25

ALTA CEDAR OAKS SIGNATURE 19G (P) Red
 ALTA CEDAR SIGNATURE 119N (IMP CAN) (P) Roan
 ALTA CEDAR LILIAN 88G (P) Roan
Dam: LONE PINE ROANY A025 (P) (AI) Red
 SPRYS GRANDLSAM Q23 (P) (ET) (SFA) Red
 LONE PINE ROANY Y67 (P) Roan
 LONE PINE ROANY S62 (P) RLW

Purchaser:.....\$.....

MEASUREMENTS	
Scrotal Size	
Weight	
EMA	
Rib Fat	
Rump Fat	
IMF	

INTERIM GROUP BREEDPLAN EBVs 01/06/2011												
	GL	BW	200	400	600	MILK	SS	EMA	RIB	RUMP	RBV	IMF
EBV	-3.2	+3.2	+24	+32	+35	+4	+2.3	+1.0	-0.6	-0.5	-0.1	+1.1
ACC	58%	70%	69%	61%	60%	37%	44%	32%	38%	38%	36%	33%

Traits Observed: GL, BWT, 200WT, 400WT, SS, FAT, EMA, IMF

29 SPRYS SANDY F219 (P) (AI)

Age: 15.5 months

DOB: 28/04/10

Colour: Red

Ident No.: GLSF219

SUTHERLAND TITLEIST 269 ET (P) (AI) (SFA) Red
 SUTHERLAND BUNDABERG (IMP USA) (P) (ET) RLW
 MARELLAN IRISH ISOBEL 38TH (P) (SFA) Roan
Sire: WEEBOLLABOLLA WARATAH W26 (P) (AI) Red
 WEEBOLLABOLLA J224 (P) (AI) (SFA) RLW
 WEEBOLLABOLLA REVOLUTION R123 (P) (SFA) Red
 WEEBOLLABOLLA JACKPOT J216 (P) (SFA) RLW

NOTES: **Top 1% for Gestation Length**
Top 5% for Rump Fat
Top 10% for Calving Ease & Rib Fat
Top 20% for BW

A very correct, well balanced bull with great EBV's for calving ease traits. Note the positive Fat EBV's.

SELECTION INDEX VALUES	
Target Market:	Index Value:
Heavy Domestic	+\$27
Export Maternal	+\$19
SB3 Carcase	+\$16

ALTA CEDAR OAKS SIGNATURE 19G (P) Red
 ALTA CEDAR SIGNATURE 119N (IMP CAN) (P) Roan
 ALTA CEDAR LILIAN 88G (P) Roan
Dam: LONE PINE CHERRY B065 (P) (ET) (AI) Red
 SPRYS JUST A LEGEND W019 (P) (ET) (AI) Red
 LONE PINE CHERRY Y58 (P) (ET) Red
 LONE PINE CHERRY N49 (P) (AI) (SFA) Roan

Purchaser:.....\$.....

MEASUREMENTS	
Scrotal Size	
Weight	
EMA	
Rib Fat	
Rump Fat	
IMF	

INTERIM GROUP BREEDPLAN EBVs 01/06/2011															
	CE-DIR	GL	BW	200	400	600	MCW	MILK	SS	CWT	EMA	RIB	RUMP	RBV	IMF
EBV	+4.1	-3.6	+1.3	+23	+25	+25	+33	+2	+0.6	+23	+2.4	+0.6	+1.4	-0.2	+0.5
ACC	40%	63%	74%	72%	66%	66%	57%	52%	54%	57%	46%	52%	53%	50%	50%

Traits Observed: GL, BWT, 200WT, 400WT, SS, FAT, EMA, IMF

30 SPRYS JUST RIGHT F34 (P) (SFA)

Age: 15 months DOB: 07/05/10 Colour: Red Ident No.: GLSF34

JR LEGEND 78H (IMP USA) (P) Red
 FUTURITY OUTBACK W1 (P) (ET) (AI) (SFA) Red
 SPRYS PROPHETS M9 ENIA 2ND (H) (ET) (AI) (SFA) Red
Sire: SPRYS JUST RIGHT Z077 (P) (AI) (SFA) Red
 GUMBLE GONZALES 4TH (P) RLW
 COONARDOO 964 (P) (SFA) Red
 COONARDOO ROCHELLE (P) (SFA) Red

NOTES: **Top 10% for IMF**
Top 20% for BW
Top 25% for Scrotal

Should be a good heifer bull but also ideal for cows. A young red bull who appeals for his overall balance and correctness. Out of an outstanding female. Certainly a bull to have a good look at.

SELECTION INDEX VALUES	
Target Market:	Index Value:
Heavy Domestic	+\$28
Export Maternal	+\$32
SB3 Carcase	+\$29

EIONMOR PORT-O-CALL 60H (IMP CAN) (P) Red
 LINSMAU HIGH PROFILE (P) (AI) RLW
 LINSMAU GAIETY 8TH F54 (P) (AI) RLW
Dam: SPRYS PROFILES ENIA C042 (P) Red Little White
 SPRINGWOOD STATION CHICAGO HOPE (P) Roan
 SPRYS CH ENIA X117 (P) Roan
 SPRYS P.P. MISS ROLEX Q32 (P) (AI) RLW

Purchaser:.....\$.....

MEASUREMENTS	
Scrotal Size	
Weight	
EMA	
Rib Fat	
Rump Fat	
IMF	

INTERIM GROUP BREEDPLAN EBVs 01/06/2011

	BW	200	400	600	MCW	MILK	SS	CWT	EMA	RIB	RUMP	RBY	IMF
EBV	+1.7	+19	+26	+37	+43	+3	+1.7	+28	+3.0	-0.6	-0.4	+0.6	+1.0
ACC	73%	69%	61%	61%	50%	37%	43%	50%	36%	45%	45%	43%	40%

Traits Observed: BWT, 200WT, 400WT, SS, FAT, EMA, IMF

31 SPRYS J.R ROSE F14 (P) (SFA)

Age: 16.5 months DOB: 26/03/10 Colour: Red Ident No.: GLSF14

JR LEGEND 78H (IMP USA) (P) Red
 FUTURITY OUTBACK W1 (P) (ET) (AI) (SFA) Red
 SPRYS PROPHETS M9 ENIA 2ND (H) (ET) (AI) (SFA) Red
Sire: SPRYS JUST RIGHT Z077 (P) (AI) (SFA) Red
 GUMBLE GONZALES 4TH (P) RLW
 COONARDOO 964 (P) (SFA) Red
 COONARDOO ROCHELLE (P) (SFA) Red

NOTES: **Top 1% for IMF**
Top 5% for Rib & Rump Fat
Top 10% for BW
Top 15% for Scrotal

Sired by our heifer bull specialist, (calving ease) a dark red bull with good indicators for do-ability and calving ease. Should be good for heifers and cows and increase IMF in your herd.

SELECTION INDEX VALUES	
Target Market:	Index Value:
Heavy Domestic	+\$31
Export Maternal	+\$35
SB3 Carcase	+\$28

TREVINO STATESMAN 1ST (P) (AI) Roan
 BROUGHTON PARK SENATOR Y041 (P) Red
 BROUGHTON PARK MARCHIONESS U045 (P) RLW
Dam: SPRYS SENATORS ROSE C186 (P) (AI) Roan
 SPRYS CCC IMPACT V500 (P) (ET) (AI) Roan
 MINING VALE ROSE Y021 (P) Roan
 MINING VALE V ROSE T25 (P) (ET) (AI) Roan

Purchaser:.....\$.....

MEASUREMENTS	
Scrotal Size	
Weight	
EMA	
Rib Fat	
Rump Fat	
IMF	

INTERIM GROUP BREEDPLAN EBVs 01/06/2011

	BW	200	400	600	MCW	MILK	SS	CWT	EMA	RIB	RUMP	RBY	IMF
EBV	+0.7	+18	+20	+30	+39	+6	+1.9	+22	+2.2	+1.0	+1.8	-1.0	+1.8
ACC	73%	69%	62%	61%	50%	37%	43%	51%	38%	46%	46%	44%	41%

Traits Observed: BWT, 200WT, 400WT, SS, FAT, EMA, IMF

32 KOORON SPRYS KUDALE E014 (P)

Age: 28 months DOB: 31/03/09 Colour: Roan Ident No.: KDCE014

SPRYS GRANDSLAM Q23 (P) (ET) (SFA) Red
 NARRALDA WARRIOR V11 (P) (AI) Roan
 NARRALDA ROBIN Q1 (P) (TWIN) (AI) Roan
Sire: LACHLAN WARRIOR DALE (P) Red
 NARRALDA LEDGER W55 (P) (AI) RLW
 THE GROVE DALE Z046 (P) (ET) (AI) Red
 THE GROVE DALE 39TH (P) (SFA) Red

NOTES: An early maturing bull showing do-ability, a good moderate frame and nice carcase traits.

Please note: This bull missed the cut-off (by 20 days) for submission of raw data for carcase EBV's. However, raw data will be available upon request. Our apologies for this inconvenience.

SELECTION INDEX VALUES	
Target Market:	Index Value:
Heavy Domestic	+\$21
Export Maternal	+\$20
SB3 Carcase	+\$26

GUMBLE CAPRICORN 2ND (P) (AI) Roan
 THE GROVE KUDU W024 (H) Roan
 THE GROVE DIZZY 1ST (H) (ET) (AI) Red
Dam: LACHLAN ENIA B062 (H) (ET) White
 MARRINGTON LEGEND (P) (AI) (SFA) Roan
 SPRYS LEGENDS ENIA N18 (P) (SFA) Roan
 SPRYS PEPPER'S ENIA L13 (P) (ET) (AI) (SFA) R&W

Purchaser:.....\$.....

MEASUREMENTS	
Scrotal Size	
Weight	
EMA	
Rib Fat	
Rump Fat	
IMF	

INTERIM GROUP BREEDPLAN EBVs 17/06/2011

	200	400	600	MILK
EBV	+24	+29	+36	+6
ACC	42%	40%	40%	35%

Traits Observed: 400WT, 600WT

33 KOOROON SPRYS MASTER DALE (P)

Age: 24 months DOB: 04/08/09 Colour: Red Little White Ident No.: KDCE027

Sire: **LACHLAN WARRIOR DALE (P) Red**
 SPRYS GRANDSLAM Q23 (P) (ET) (SFA) Red
 NARRALDA WARRIOR V11 (P) (AI) Roan
 NARRALDA ROBIN Q1 (P) (TWIN) (AI) Roan
 NARRALDA LEDGER W55 (P) (AI) RLW
 THE GROVE DALE Z046 (P) (ET) (AI) Red
 THE GROVE DALE 39TH (P) (SFA) Red

NOTES: **Lot 33- KDCE027**
Top 10% RBY
Top 20% Scrotal
Top 30% SB3 index

"Master Dale" is a moderate framed, long bodied bull expressing structural soundness and overall completeness.

SELECTION INDEX VALUES	
Target Market:	Index Value:
Heavy Domestic	+\$23
Export Maternal	+\$22
SB3 Carcase	+\$33

Dam: **LACHLAN LILY B088 (P) (ET) Red Little White**
 RONELLE PARK WYATT EARP (P) (AI) Roan
 SPRYS MASTER BLASTER Z039 (P) Roan
 SPRYS BRAGS AUGUSTA M150 (H) White
 SPRYS CHOICE Q14 (P) Roan
 SPRYS CHOICES LILY S111 (P) (SFA) Roan
 SPRYS SIXES LILY 2ND (H) (ET) (AI) (SFA) RLW

Purchaser:.....\$.....

MEASUREMENTS	
Scrotal Size	
Weight	
EMA	
Rib Fat	
Rump Fat	
IMF	

INTERIM GROUP BREEDPLAN EBVs 17/06/2011										
	200	400	600	MILK	SS	EMA	RIB	RUMP	RBY	IMF
EBV	+29	+35	+47	+6	+1.8	+4.1	-1.6	-1.8	+2.2	+0.4
ACC	43%	41%	41%	35%	36%	30%	35%	35%	34%	32%

Traits Observed: 400WT, 600WT, SS, FAT, EMA, IMF

34 KOOROON SPRYS WARRIOR E042 (P)

Age: 20 months DOB: 12/12/09 Colour: Red Ident No.: KDCE042

Sire: **LACHLAN WARRIOR DALE (P) Red**
 SPRYS GRANDSLAM Q23 (P) (ET) (SFA) Red
 NARRALDA WARRIOR V11 (P) (AI) Roan
 NARRALDA ROBIN Q1 (P) (TWIN) (AI) Roan
 NARRALDA LEDGER W55 (P) (AI) RLW
 THE GROVE DALE Z046 (P) (ET) (AI) Red
 THE GROVE DALE 39TH (P) (SFA) Red

NOTES: **Top 15% RBY**
Top 20% Scrotal

A moderate bull that shows great softness and fine hair type with good thickness.

SELECTION INDEX VALUES	
Target Market:	Index Value:
Heavy Domestic	+\$25
Export Maternal	+\$24
SB3 Carcase	+\$32

Dam: **LACHLAN JAN C020 (P) (ET) Roan**
 RONELLE PARK WYATT EARP (P) (AI) Roan
 SPRYS MASTER BLASTER Z039 (P) Roan
 SPRYS BRAGS AUGUSTA M150 (H) White
 MOUNTAIN TOP DREAM ON (P) (AI) (SFA) RLW
 PARK LANE JAN S6 (P) (SFA) RLW
 PARK LANE JAN 4TH (P) (SFA) Red

Purchaser:.....\$.....

MEASUREMENTS	
Scrotal Size	
Weight	
EMA	
Rib Fat	
Rump Fat	
IMF	

INTERIM GROUP BREEDPLAN EBVs 17/06/2011										
	BW	200	400	600	SS	EMA	RIB	RUMP	RBY	IMF
EBV	+3.7	+26	+34	+46	+1.8	+3.9	-1.4	-1.5	+2.0	+0.4
ACC	44%	42%	42%	41%	37%	30%	33%	33%	33%	30%

Traits Observed: BWT, 400WT, 600WT, SS, FAT, EMA, IMF

35 SPRYS EDDIE E030 (P)

Age: 23 months DOB: 23/09/09 Colour: Red Ident No.: MKSE030

Sire: **SOUTHCOTE YALE Y157 (P) (AI) Red Little White**
 WEEBOLLABOLLA THEODORE T85 (P) Roan
 ROYALLA EXTERMINATOR (P) Roan
 ROYALLA ITA 10TH (P) (SFA) Roan
 SOUTHCOTE WRANGLER (P) Red
 SOUTHCOTE RUPERTA W1 (P) RLW
 SOUTHCOTE RUPERTA P69 (P) Roan

NOTES: **Top 15% RIB & RUMP**

An early maturing bull showing overall completeness and adequate carcass. A great heifer bull!

SELECTION INDEX VALUES	
Target Market:	Index Value:
Heavy Domestic	+\$8
Export Maternal	+\$5
SB3 Carcase	+\$8

Dam: **SPRYS S & S PATSY C044 (P) (AI) (SFA) Red Little White**
 DCC PROPHET X (IMP USA) (P) (SFA) Red
 EDEN PARK STARS & STRIPES H1 (P) (SFA) Roan
 MANDALONG ENIA D1 (P) Roan
 THE GROVE IMPECCABLE U082 (P) RLW
 THE GROVE PATSY Y002 (P) Red
 THE GROVE D.E. PATSY T55 (P) Red

Purchaser:.....\$.....

MEASUREMENTS	
Scrotal Size	
Weight	
EMA	
Rib Fat	
Rump Fat	
IMF	

INTERIM GROUP BREEDPLAN EBVs 17/06/2011												
	BW	200	400	600	MILK	SS	CWT	EMA	RIB	RUMP	RBY	IMF
EBV	+1.1	+12	+17	+10	+2	+0.8	+12	+1.9	0.0	+0.2	-0.2	+0.4
ACC	70%	64%	66%	62%	35%	41%	53%	36%	44%	44%	42%	39%

Traits Observed: BWT, 400WT, 600WT, SS, FAT, EMA, IMF

SHORTHORN/CHAROLAIS X BULLS

36 SPRYS BRAZEN E050

Age: 23 months DOB: 21/09/09 Colour: Cream/Apricot Ident No.: MKSE050

WCR PRIME CUT 764 PLD PMC223447
PALGROVE YARDSTICK (AI) (P)
PALGROVE ALYSSA 22 (P)

NOTES: An early maturing, muscular, deep bodied bull with excellent softness and outlook.

Sire: PALGROVE BRAZEN (P)

PALGROVE TOP NOTCH (AI) (ET)
PALGROVE PANACHE 112
PALGROVE PANACHE 86

Dam: SPRYS X269

Purchaser:.....\$.....

MEASUREMENTS

Scrotal Size |

Weight |

EMA |

Rib Fat |

Rump Fat |

IMF |

Sire EBV's:

Palgrove Brazen (P) EBVs

MAY 2011 AUSTRALASIAN CHAROLAIS GROUP BREEDPLAN																
	CE-DIR	CE-DTRS	GL	BW	200	400	600	MCW	MILK	SS	CWT	EMA	RIB	RUMP	RBY	IMF
EBV	+2.7	-1.6	-3.1	+0.1	+12	+21	+29	+23	+1	+1.6	+14	+1.4	+1.0	+1.4	-0.5	+0.2
ACC	63%	48%	54%	82%	85%	80%	82%	69%	43%	75%	70%	55%	66%	66%	61%	49%

Traits Observed: BWT, 200WT, 600WT, SS, FAT, EMA, IMF

37 SPRYS BRAZEN E034

Age: 23 months DOB: 18/09/09 Colour: Cream/Apricot Ident No.: MKSE034

WCR PRIME CUT 764 PLD PMC223447
PALGROVE YARDSTICK (AI) (P)
PALGROVE ALYSSA 22 (P)

NOTES: A soft, cream roan sire with nice carcass characteristics on a moderate frame.

Sire: PALGROVE BRAZEN (P)

PALGROVE TOP NOTCH (AI) (ET)
PALGROVE PANACHE 112
PALGROVE PANACHE 86

Dam: SPRYS Z106

Purchaser:.....\$.....

MEASUREMENTS

Scrotal Size |

Weight |

EMA |

Rib Fat |

Rump Fat |

IMF |

Sire EBV's:

Palgrove Brazen (P) EBVs

MAY 2011 AUSTRALASIAN CHAROLAIS GROUP BREEDPLAN																
	CE-DIR	CE-DTRS	GL	BW	200	400	600	MCW	MILK	SS	CWT	EMA	RIB	RUMP	RBY	IMF
EBV	+2.7	-1.6	-3.1	+0.1	+12	+21	+29	+23	+1	+1.6	+14	+1.4	+1.0	+1.4	-0.5	+0.2
ACC	63%	48%	54%	82%	85%	80%	82%	69%	43%	75%	70%	55%	66%	66%	61%	49%

Traits Observed: BWT, 200WT, 600WT, SS, FAT, EMA, IMF

38 SPRYS ULTIMATE F48 (P)

Age: 15 months DOB: 24/05/10 Colour: Apricot Ident No.: GLS48

WCR PRIME CUT 764 PLD PMC223447
PALGROVE YARDSTICK (AI) (P)
PALGROVE ALYSSA 22 (P)

NOTES: F48 (Polled) is a cracker. He has tremendous thickness and structure in a soft, easy doing package. They do not come any better than this one. Great scrotal development like his sire.

Sire: PALGROVE BRAZEN (P)

PALGROVE TOP NOTCH (AI) (ET)
PALGROVE PANACHE 112
PALGROVE PANACHE 86

Dam: COONARDOO 266 (Sprys/Gumble Blood)

Purchaser:.....\$.....

MEASUREMENTS

Scrotal Size |

Weight |

EMA |

Rib Fat |

Rump Fat |

IMF |

Sire EBV's:

Palgrove Brazen (P) EBVs

MAY 2011 AUSTRALASIAN CHAROLAIS GROUP BREEDPLAN																
	CE-DIR	CE-DTRS	GL	BW	200	400	600	MCW	MILK	SS	CWT	EMA	RIB	RUMP	RBY	IMF
EBV	+2.7	-1.6	-3.1	+0.1	+12	+21	+29	+23	+1	+1.6	+14	+1.4	+1.0	+1.4	-0.5	+0.2
ACC	63%	48%	54%	82%	85%	80%	82%	69%	43%	75%	70%	55%	66%	66%	61%	49%

Traits Observed: BWT, 200WT, 600WT, SS, FAT, EMA, IMF

SHORTHORN/CHAROLAIS X BULLS

39 SPRYS TOP PERFORMER F69 (Scurred)

Age: 13 months

DOB: 04/07/10

Colour: Apricot

Ident No.: GLSF69

WCR PRIME CUT 764 PLD PMC223447

PALGROVE YARDSTICK (AI) (P)

PALGROVE ALYSSA 22 (P)

Sire: PALGROVE BRAZEN (P)

PALGROVE TOP NOTCH (AI) (ET)

PALGROVE PANACHE 112

PALGROVE PANACHE 86

NOTES: F69 (Scurred) has unbelievable growth and length and yet maintaining the softness and do-ability we need in our breeding programme. Also note the tremendous scrotal size for his age. F69 will certainly put the extra weight in your end product.

DUNBEACON WAGAMAN (P) (SFA)

Dam: SPRYS WAGMANS HARMONY Z131 (P) (SFA) White

SPRYS H.P. HARMONY S17 (P)

Purchaser:.....\$.....

Sire EBV's:

Palgrove Brazen (P) EBVs

MEASUREMENTS

Scrotal Size |

Weight |

EMA |

Rib Fat |

Rump Fat |

IMF |

MAY 2011 AUSTRALASIAN CHAROLAIS GROUP BREEDPLAN

	CE-DIR	CE-DTRS	GL	BW	200	400	600	MCW	MILK	SS	CWT	EMA	RIB	RUMP	RBY	IMF
EBV	+2.7	-1.6	-3.1	+0.1	+12	+21	+29	+23	+1	+1.6	+14	+1.4	+1.0	+1.4	-0.5	+0.2
ACC	63%	48%	54%	82%	85%	80%	82%	69%	43%	75%	70%	55%	66%	66%	61%	49%

Traits Observed: BWT, 200WT, 600WT, SS, FAT, EMA, IMF

Sprys Wagmans Harmony Z131 EBVs

2011 AUTUMN TRANS-TASMAN SHORTHORN GROUP BREEDPLAN EBVS

	CE-DIR	CE-DTRS	GL	BW	200	400	600	MCW	MILK	SS	CWT	EMA	RIB	RUMP	RBY	IMF
EBV	-6.0	-1.0	+1.5	+5.1	+29	+37	+53	+74	+9	+1.2	+35	+2.1	-1.0	-1.1	+0.2	+0.8
ACC	45%	40%	52%	66%	73%	70%	72%	68%	64%	59%	63%	52%	64%	64%	60%	56%

40 SPRYS BALANCE F29 (P)

Age: 16 months

DOB: 03/04/10

Colour: Apricot

Ident No.: GLSF29

WCR PRIME CUT 764 PLD PMC223447

PALGROVE YARDSTICK (AI) (P)

PALGROVE ALYSSA 22 (P)

Sire: PALGROVE BRAZEN (P)

PALGROVE TOP NOTCH (AI) (ET)

PALGROVE PANACHE 112

PALGROVE PANACHE 86

Purchaser:.....\$.....

Dam: COONARDOO 209 (Sprys/Gumble Blood)

Sire EBV's:

Palgrove Brazen (P) EBVs

MEASUREMENTS

Scrotal Size |

Weight |

EMA |

Rib Fat |

Rump Fat |

IMF |

MAY 2011 AUSTRALASIAN CHAROLAIS GROUP BREEDPLAN

	CE-DIR	CE-DTRS	GL	BW	200	400	600	MCW	MILK	SS	CWT	EMA	RIB	RUMP	RBY	IMF
EBV	+2.7	-1.6	-3.1	+0.1	+12	+21	+29	+23	+1	+1.6	+14	+1.4	+1.0	+1.4	-0.5	+0.2
ACC	63%	48%	54%	82%	85%	80%	82%	69%	43%	75%	70%	55%	66%	66%	61%	49%

Traits Observed: BWT, 200WT, 600WT, SS, FAT, EMA, IMF

*Sprys use
and recommend
Mainland
Finance*



**FOR ALL EQUIPMENT FINANCE
REQUIREMENTS
From Farming & Earthmoving
Equipment to LIVESTOCK
FINANCE
Competitive Rates from a
variety of lenders!**

**Category Winner
in the 2003 Australia
Post NSW/ACT
Small Business Awards**

Call Amy Perfrement
Ph 02 6742 6106 BH • Ph 02 6744 1133 AH
Email: mainland@bigpond.net.au

EXPLANATORY NOTES FOR CATALOGUES

Only 2011 AUTUMN Trans-Tasman Shorthorn GROUP BREEDPLAN EBV's or Interim EBVs with Accuracy (Acc) can be validly compared between Shorthorn herds.

ESTIMATED BREEDING VALUES (EBVs)

The EBV is the best estimate of an animal's genetic merit for that trait.

ACCURACY

An accuracy is presented with every EBV and gives an indication of the amount of information that has been used in the calculation of that EBV. The higher the accuracy the lower the likelihood of change in the animal's EBV as more information is analysed for that animal or it's relatives. Accuracy below 75% should be considered low.

CALVING EASE

EBVs are based on calving ease (CE) scores, birth weights and gestation length information. More positive EBVs are favourable and indicate easier calving.

DIR: Direct calving ease indicates how this animal influences the birth of its progeny.

DTRS: Daughter's calving ease indicates how well the animal produces daughters that have easier calving.

BIRTH

GL: Gestation Length EBV (days) is based on AI records. Lower (negative) GL EBVs indicate easier calving and increased growth after birth.

BWT: Birth Weight EBV (kg) is based on the measured birth weight of animals, adjusted for dam age. The lower the value the lighter the calf at birth and the lower the likelihood of a difficult birth. This is particularly important when selecting sires for use over heifers.

FERTILITY

SS: Scrotal Size EBV (cm) is an indicator of male fertility in regards to semen quality and quantity. Higher (positive) EBVs indicate higher fertility. SS is also positively associated with female fertility.

GROWTH

MILK: 200-Day Milk EBV (kg) is an estimate of an animal's milking ability. For sires, this EBV is indicative of their daughter's milking ability as it affects the 200 and 400 day weight of their calves.

200: 200-Day Growth EBV (kg) is calculated from the weight of animals taken between 80 and 300 days of age. Values are adjusted to 200 days and for age of dam. This EBV is the best single estimate of an animal's genetic merit for growth to early ages.

400: 400-Day Weight EBV (kg) is calculated from the weight of progeny taken between 301 and 500 days of age, adjusted to 400 days and for age of dam. This EBV is the best single estimate of an animal's genetic merit for yearling weight.

600: 600-Day Weight EBV (kg) is calculated from the weight of animals taken between 501 and 900 days of age, adjusted to 600 days and for age of dam. This EBV is the best single estimate of an animal's genetic merit for growth beyond yearling age.

MWT: Mature Cow Weight EBV (kg) is an estimate of the genetic different in cow weight at 5 years of age.

CARCASE

CWT: Carcase Weight EBV (kg) estimates the genetic difference in carcase weight at a standard age of 650 days.

EMA: Eye Muscle Area EBV (cm²) estimates genetic differences in eye muscle area at the 12/13th rib site of a 300kg dressed carcase. More positive EBVs indicate better muscling on animals.

RIB: Rib Fat EBV (mm) estimates the genetic differences in fat depth at the 12/13th rib in a 300kg dressed carcase. More positive EBVs indicate more subcutaneous fat and earlier maturity.

RUMP: Rump Fat EBV (mm) estimates the genetic differences in fat depth at the P8 site of a 300kg dressed carcase. More positive EBVs indicate more subcutaneous fat and earlier maturity.

RBV%: Retail Beef Yield Percent EBV (%) represents total (boned out) meat yield as a percentage of a 300kg dressed carcase. A more positive EBV indicates higher percentage yield for the 300kg carcase size.

IMF%: Intra-muscular Fat Percent EBV (%) is an estimate of the genetic difference in the percentage of intra-muscular fat at the 12/13th rib site in a 300kg carcase. Depending on market targets, larger more positive values are generally more favourable.

The Trans-Tasman Shorthorn GROUP BREEDPLAN Estimated Breeding Values contained in this Sale Catalogue were compiled by the Agricultural Business Research Institute (ABRI) from data supplied by the breeders. Neither the Shorthorn Society of Australia, the Beef Shorthorn Society of Australia, the New Zealand Beef Shorthorn Association nor the ABRI oversee or audit the collection of this data.

DOM: Heavy Domestic index (\$) estimates the genetic differences between animals in net profitability per cow joined for an example commercial herd in a temperate environment targeting pasture grown and finished steers for the domestic trade (eg. supermarket). Steers are marketed at 480 kg live weight (260 kg HSCW and 10 mm P8 fat depth) at 22 months of age. Daughters are retained for breeding.

EXP: Export Maternal index (\$) estimates genetic differences between animals in net profitability per cow joined for an example commercial herd (self-replacing herd run in a temperate environment) targeting steers for the Japanese B3 market. Steers are assumed to be pasture grown to feedlot entry then feedlot finished for 150 days. Steers are assumed to be marketed to the feedlot at 450 kg live weight, and then slaughtered after finishing at 675 kg live weight (370kg HSCW).

SB3: SB3 Carcase index (\$) estimates genetic differences between animals in net profitability for an example commercial herd targeting steers that meet the requirements of the feedlot and processing industry for the Japanese export market. Steers are assumed to be pasture grown to feedlot entry then feedlot finished for 150 days. Steers are assumed to be marketed to the feedlot at 450 kg live weight, and then slaughtered after finishing at 675 kg live weight (370kg HSCW). This Index was primarily developed for selecting sire lines of steers entering a long-fed feeding program. **Caution should be taken when using this index in bull selection as no considerations has been made for important traits, such as birth weight calving ease or the maternal traits.**

Note that SIndex Values for individual animals are sensitive to the assumptions used in the BreedObject analysis to calculate the selection index. For more information on these assumptions and weightings go to the Shorthorn Society web site.

ZEE TAGS SUPERIOR NLIS SOLUTIONS

NLIS CATTLE BUTTON TAG



- ✓ FAST and EASY application
- ✓ Superior retention
- ✓ UV stabilised button
- ✓ Will not damage the chip on application

NLIS Ezy READ TAG



- ✓ Same great benefits as NLIS button AND MORE!
- ✓ Perfectly complements visual tags
- ✓ NLIS Tags YOU CAN SEE
- ✓ 2 lines of Lazer Black printing included

Proud Sponsors of:
**Spry's Shorthorns
Bred for Carcase
Bull Sale**



Buy 100 NLIS Zee Tags and receive a FREE Z2 No Tear Tagger

*One Tagger per customer with first order of NLIS Tags



Ph: 1300 594 696
Fax: 1300 366 933
Email: info@zeetags.com.au

AVAILABLE FROM YOUR LOCAL RURAL RETAILER

Once it's in, it's in!

www.zeetags.com.au

CARING FOR YOUR NEW BULL

Respect your bulls and handle them quietly, walk them rather than rushing them. Treat them with care and in a gentle manner and they will reciprocate.

A bull leaving Spry's is leaving the security of a mob and will arrive at unfamiliar territory at our property. If you can't put him into the bull mob straight away, unload him and make sure he has a steer or cow as a companion.

A young bull can move in with older bulls and settle in well, but remember, being the youngest he will get the last of the feed available because of the pecking order. The paddock needs to be reasonably large so he can keep away from the others and find adequate feed.

Young bulls are growing fast and need enough feed to maintain their growth pattern and to be able to settle the cows quickly and efficiently.

Sprys bulls are all injected with 7 in 1 vaccine at 3 months of age and six weeks later and then a booster as a yearling.

It is important to give your bull a 2nd Vibrio vaccination and follow up each year. Vibriosis is a common cause of infertility and is transmitted by bulls from one female to another. It is easily prevented by vaccination prior to joining each year. A drench is important when he is finished with the cows.

Sprys sale bulls will handle approximately 50 cows on their own or can go in with 100 cows after a good AI program. Sprys bulls are used to being handled on motorbikes and with dogs. Most fences are electrified and bulls treat them with respect.

Before mating, cows should be seen cycling in groups with male calves also hanging around. The cows must be on a rising plane of nutrition, before you put the bull out ensuring they have optimum chance of cycling.

You must always keep a regular watch over your bull when he is out with the cows. Accidents can happen and every day he is not working will cost you money. Bulls can simply scatch their penis on a dry manure on the cow's backside and infection can set in and a very large and alarming appendage can form. If treated quickly and efficiently, this can be remedied.

During the mating season, the boundary rider must include observing bulling cows and the bull serving. This is easy because the cows will group together, have full bags of milk and will be followed by the bull calves.

If the bull is not serving, he must be replaced that day. If a cow has been served before the observer has arrived the bull may not repeat the performance.

When the season is finished the bull should be drenched and put away with good feed. Adequate feed will help stop fighting and help bulls settle in their groups.

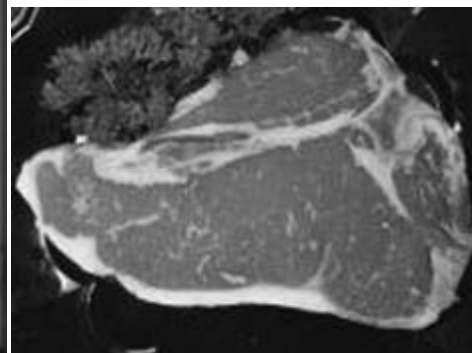
Always be considerate to your bull and handle him with respect and kindness. You will find that you receive acts of respect back from him.



Organic Beef and Lamb

Clean healthy meat for your families future wellbeing.

Shorthorn/Angus and Shorthorn/Angus/Hereford heifers.



Order online at www.myallsprings.com.au - Organic beef page
or alternatively, please call Matt on 0428 433 525 or Mel 0267 433 525 for further information.

AGENT CONTACTS

LANDMARK

look to us

Gunnedah (02) 6742 3899
Scott Cooper 0427 674 411

Tamworth (02) 6765 5211
Mark Haywood 0417 467 911
Scott Simshauser 0428 659 319

Wagga Wagga (02) 6921 1511
Mark Barton 0419 488 256

Dubbo
John Settree 0408 297 368

Armidale (02) 6772 7082

Barraba
Howard Carter 0427 884 448

Cootamundra
Andrew Wishart 0407 424 706

Albury (02) 6025 1677
Kevin Norris 0419 482 151
Peter Godbolt 0457 591 929

Melbourne
Ray Attwell 0428 836 136
Andrew Sloane 0428 522 204

Goulburn
Kevin Coves 0409 158 164

S.A.
Gordon Wood 0408 813 215

Strathalbyn
Malcolm Scroop 0428 838 363

Perth
John Wirth 0427 414 205
Preston Clarke 0429 151 735

LANDMARK

finance insurance real estate wool farm services livestock fertiliser merchandise look to us

AGENT CONTACTS



Local People, Local Knowledge, Regional Network

Davidson Cameron McCulloch & Co Tamworth (02) 6762 4440
Daniel McCulloch 0429 613 332
Scott Newberry 0447 624 440
Angus Laurie 0487 661 214

Davidson Cameron & Co Gunnedah (02) 6742 1828
Luke Scicluna 0428 421 828
Dave Henry 0427 421 829

Davidson Cameron & Co Quirindi (02) 6746 2177
Richard Cudmore 0428 658 497
Tom Tanner 0448 462 177

Davidson Cameron & Co Coonabarabran (02) 6842 1177
Peter Sawyer 0427 421 436

Davidson Cameron & Co Coolah (02) 6377 1555
Ken Maslen 0427 922 700

Davidson Cameron & Co Narrabri (02) 6792 2000
Michael Guest 0429 921 700
Hunter Harley 0447 925 700

Davidson Cameron Clydesdale & Co Scone (02) 6545 9070
Warrick Clydesdale 0447 453 570

Davidson Cameron Board & Simmons Dubbo (02) 6884 8355
Graeme Board 0408 636 273
Martin Simmons 0409 844 773
Brad Cavanaugh 0428 638 384

Davidson Cameron Bloch & Co (02) 6721 0944
Robbie Bloch 0429 210 190
Phil Hurford 0428 232 394

Contact your local Davidson Cameron Livestock Agent to assist with all your livestock needs.

www.davidsoncameron.com.au

SPRYS RAMS



BRED FOR CARCASE & BUILT TO LAST...

just like our bulls



Contact Matt and Kate Spry for all enquiries

P. 02 6769 8350
F. 02 6769 8351
kate@sprys.com.au
kate@spryshorthorns.com

'Hillcrest' 345 Top Gowrie Rd
Gowrie, via TAMWORTH
NSW 2340 AUSTRALIA
www.spryswhitedorpers.com.au





BUYER'S INSTRUCTION SLIP

**To be handed in to the Settling Office immediately after the sale
(by all purchasers).**

PURCHASER DETAILS

Purchaser Name:

Trading Name:

Address:

Phone Numbers: B/H A/H Mobile

Email Address:

Manager / Stockman Phone No.:

Property Identification Code (PIC, must be provided on sale day)

DELIVERY DETAILS

Lots Purchased:

Insure for: (period) Amount:

ACCOUNT DETAILS

Signature:

If you elect to settle through an Agent who has nominated you, the Agent must sign below. This applies to ALL AGENTS.

Agent.....Signature.....

Date: 10th August, 2011

STUD REGISTRATIONS

Do you wish to have the Shorthorn Beef Registration transferred into your name? Please tick the box and if yes give your membership number.

Yes No

(Member Number)

